

# Strengthen your IHC portfolio with Thermo Scientific Antibodies

Your requirements for sensitive and specific tests to supplement your existing IHC portfolio drive our ongoing dedication for antibody development. To address these needs, we are pleased to announce the release of five superior new rabbit monoclonal antibodies to further strengthen your clinical IHC testing portfolio.

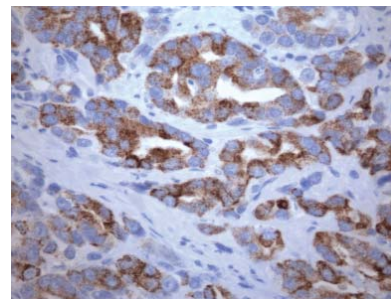
## Benefits of Rabbit Monoclonal Antibodies:

- High Affinity
- High Sensitivity and Specificity<sup>1</sup>
- Cost Effective
- High Working Dilutions

### **P504s** **Rabbit Monoclonal**

A sensitive and specific marker for the identification of prostate ca.<sup>2</sup>

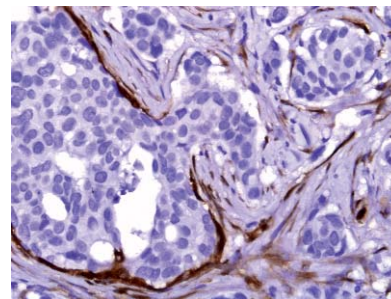
**Clone:** 13H4      **Cat #:** RM-9130



### **Calponin 1** **Rabbit Monoclonal**

Labels myoepithelial cells allowing differentiation of invasive and non-invasive breast tumors. Shown to be more sensitive and intense than SMM-HC.<sup>3</sup>

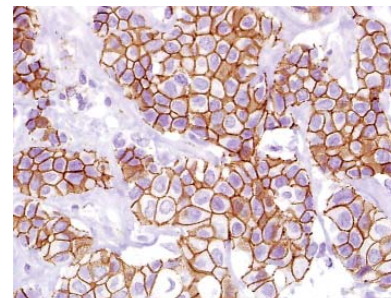
**Clone:** EP798Y      **Cat #:** RM-2102



### **E-Cadherin** **Rabbit Monoclonal**

Useful for differentiating ductal from lobular breast carcinoma<sup>4</sup>.

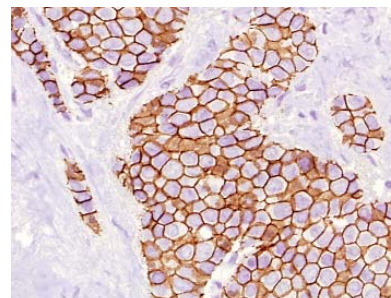
**Clone:** EP700Y      **Cat #:** RM-2100



### **Beta-Catenin** **Rabbit Monoclonal**

Beta-Catenin levels may serve as a predictor of patient outcome.<sup>5</sup>

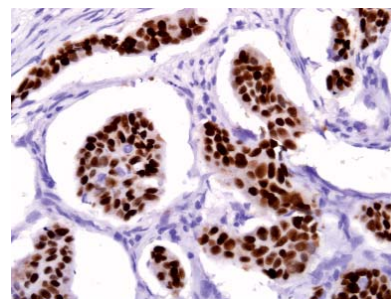
**Clone:** E247      **Cat #:** RM-2101



### **P53** **Rabbit Monoclonal**

Tumor suppressor with possible implications for treatment and prognosis.

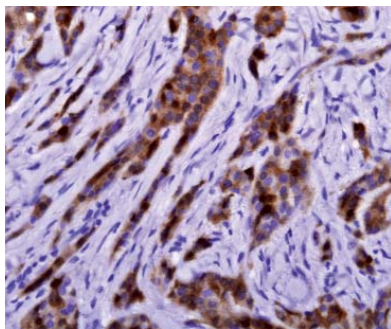
**Clone:** Y5      **Cat #:** RM-2103



# Strengthen your IHC portfolio with Thermo Scientific Antibodies

## New Mouse Monoclonal Antibodies

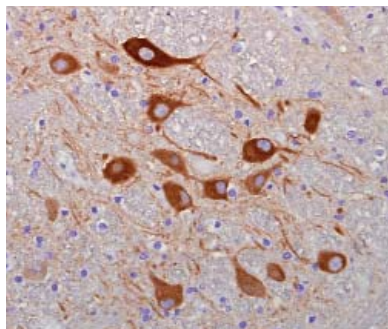
Introducing two robust and differentiated mouse monoclonal antibodies to further strengthen your IHC portfolio.



### NY-BR-1

Recent studies demonstrate that NY-BR-1 is a highly specific breast marker. Breast cells are stained positive while all other cell types are negative.

**Cat #:** MS-1932



### Dynamin 1

Dynamin 1 can be useful for the study of neurons and has been proven to play a role in the release of synaptic vesicle. For research use only.

**Cat #:** MS-1931

### References

- Rossi S, Laurino L, Furlanetto A, Chinellato S, Orvieto E, Canal F, Facchetti F, Dei Tos AP. Rabbit monoclonal antibodies: a comparative study between a novel category of immunoreagents and the corresponding mouse monoclonal antibodies. *Am J Clin Pathol.* 2005 Aug;124(2):295-302.
- Beach R, Gowen AM, de Peralta-Venturina MN, Folpe AL, Yaziji H, Salles PG et al. P504S immunohistochemical detection in 405 prostatic specimens including 376 18-gauge needle biopsies. *Am J Surg Pathol* 2002; 26(12):1588.
- Hill CB, Yeh IT. Myoepithelial cell staining patterns of papillary breast lesions: from intraductal papillomas to invasive papillary carcinomas. *Am J Clin Pathol.* 2005 Jan;123(1):36-44.
- Moll R, Mitze M, Frixen UH, Birchmeier W. Differential loss of E-cadherin expression in infiltrating ductal and lobular breast carcinomas. *Am J Pathol.* 1993 Dec;143(6):1731-42.
- Marisa Dolled-Filhart, Anthony McCabe, Jennifer Giltane, Melissa Gregger, Robert L. Camp, and David L. Rimm. Quantitative In situ Analysis of B-Catenin Expression in Breast Cancer Shows Decreased Expression In Associated with Poor Outcome. *Cancer Res* 1996; 66: 5487-5494.
- Royds JA, Iacopetta B. p53 and disease: when the guardian angel fails. *Cell Death Differ.* 2006 Jun;13(6):1017-26.
- Zsuzsanna Varga, Jean-Philippe Theurillat, Valeriy Filonenko, Bernd Sasse, Bernhard Odermatt, Achim A. Jungbluth, Yao-Tseng Chen, Lloyd J. Old, Alexander Knuth2, Dirk Jäger and Holger Moch. Preferential Nuclear and Cytoplasmic NY-BR-1 Protein Expression in Primary Breast Cancer and Lymph Node Metastases. *Clinical Cancer Research* Vol. 12, 2745-2751, May 1, 2006.
- McClure SJ, Robinson PJ. Dynamin, endocytosis and intracellular signalling (review). *Mol Membr Biol.* 1996 Oct-Dec;13(4):189-215.

## New antibodies and other antibodies of interest.

Antibody	RabMab	Clone	Cat #	Description	Predictive	Diagnostic	Therapeutic
<b>E-Cadherin</b>	•	EP700Y	RM-2100	Labels most ductal breast ca positive and most lobular breast ca negative.		•	
<b>Beta-Catenin</b>	•	E247	RM-2101	Low expression may correlate with a poor outcome.	•	•	
<b>Calponin</b>	•	EP798Y	RM-2102	Labels myoepithelial cells. Used to differentiate invasive/non invasive breast tumor.		•	
<b>p53</b>	•	Y5	RM-2103	Tumor suppressor with possible prognostic implications.	•		
<b>P504s</b>	•	13H4	RM-9130	Identification of prostate cancer.		•	
<b>ALK/P80</b>	•	SP 8	RM-9108	Stains a subset of anaplastic large cell lymphoma but does not stain Hodgkins lymphoma.		•	
<b>Chromogranin A</b>	•	SP 12	RM-9112	Identification of Neuro-Endocrine tumors.		•	
<b>CD 5</b>	•	SP 17	RM-9119	Assists in the identification of mantle cell lymphoma.		•	
<b>COX2</b>	•	SP 21	RM-9121	An epithelial tumor expression for COX2 may correlate with a poor outcome in epithelial tumors.	•		
<b>NY-BR-1</b>		NY-BR-1#2	MS-1932	Useful for identifying metastatic breast ca.		•	
<b>Dynamin 1</b>			MS-1931	Study of neuron and synaptic vesicle release.			
<b>Mammaglobin</b>		304-1A5	MS-1919	Mammary marker; elevated expression may indicate a less aggressive tumor.	•	•	

LV10003 7/08