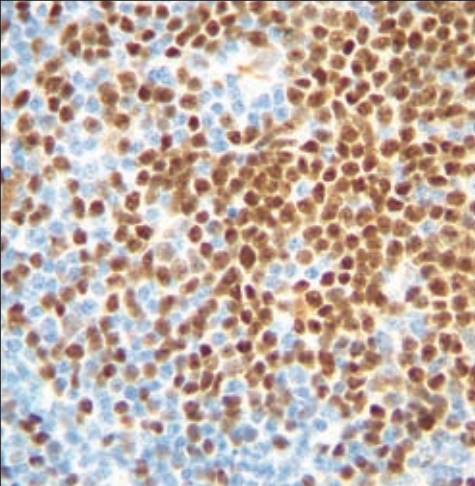


## Thermo Scientific Immunohistochemistry Solutions

Precisely what you're looking for.



When their quality of life depends on the quality of your diagnosis, fast, accurate, and cost effective solutions are critical.



The Thermo Scientific anatomical pathology product line combines the strengths and reputations of trusted names like Richard-Allan Scientific, Microm, Thermo Electron, and LabVision. The result is one brand that can provide everything you need for your anatomical pathology laboratory. More products, more support, more knowledge, more capabilities, and more innovation – precisely what you’re looking for, from one convenient resource. Our comprehensive set of diagnostic tests and instrumentation are offered with the industry’s strongest combination of price and performance, providing unsurpassed accuracy and value, and bringing much-needed standardization to a non-standardized patient testing environment.

**Pathologists – Enhance your ability to do what is best for the patient.**

- Comprehensive antibody panels provide the right test for you to make the right diagnosis.
- Rabbit monoclonal antibodies and advanced detection systems produce the most sensitive and specific tests available.
- Precise antigen retrieval and proven instrumentation ensure that your tests are consistent and reliable.

**Technologist – Gain the freedom to better utilize your time.**

- Antigen retrieval automation and monitoring ensures that the process is always consistent while consuming less of your time.
- Robust proven instrumentation allows you to spend your time handling the results instead of diagnosing instrumentation problems.
- Full bar coding of slides and reagents simplifies the instrument loading and programming process.

**Lab Managers – Enjoy the security of a simple, efficient, reliable resource.**

- Standardization via the automated Thermo Scientific PTModule and Autostainer ensures quality results.
- LIS compatibility optimizes workflow and reduces errors.
- Small, modular faster units decrease turn around time and incorporate well into continuous flow environments.
- Fully open systems allow you to control your own costs and integrate new technologies as they become available.

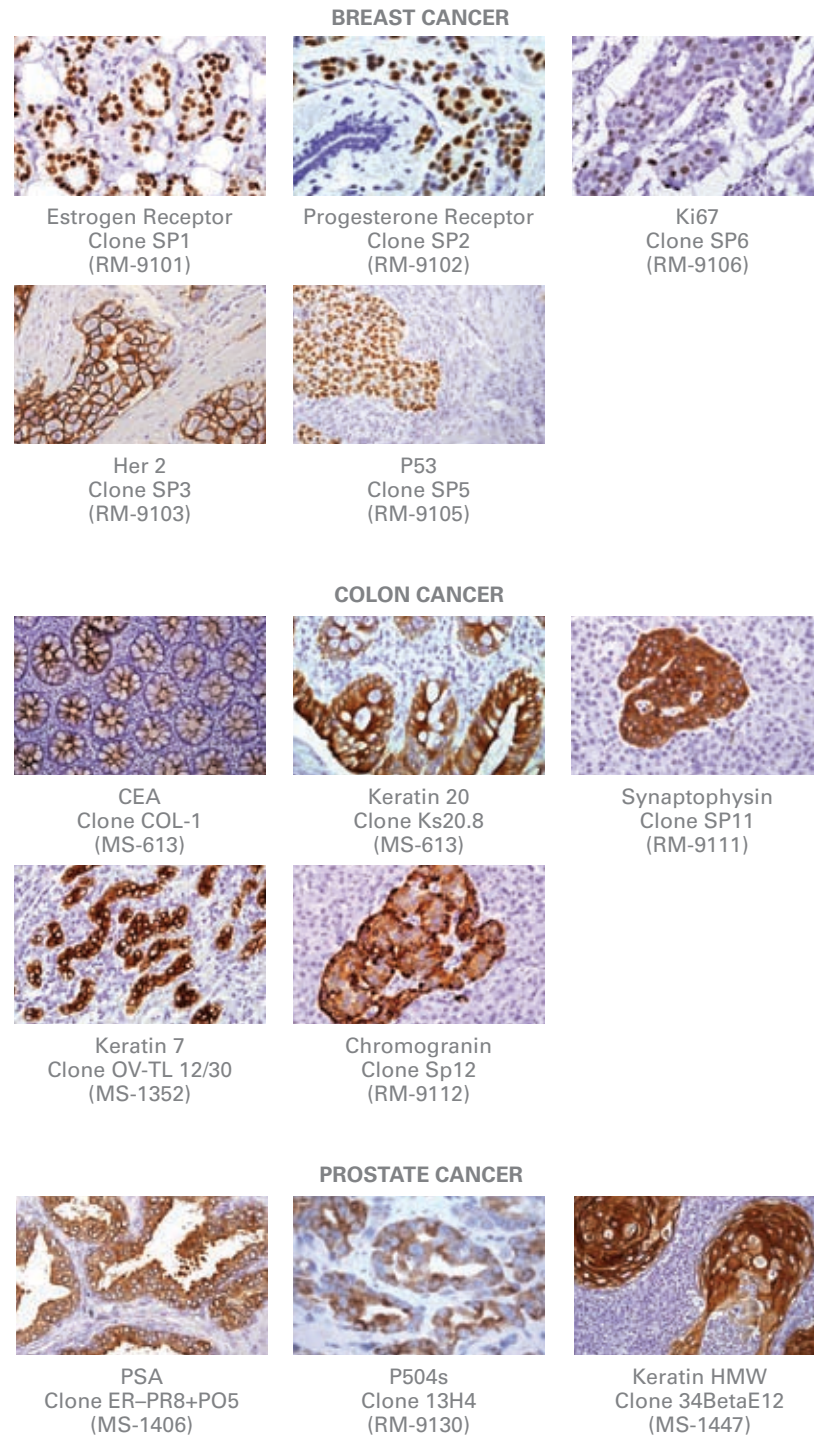
**Purchasing and Administration – Save money while saving lives.**

- Get the best value by working with the instrument and reagent manufacturer.
- Benefit from the simplicity of receiving all of your histology solutions from a single source.

## The Advantages of Thermo Scientific IHC Products

### Comprehensive IVD Antibody Panels: The right tests for the right diagnosis.

The fate of the patient rests on the clinical laboratory's ability to rapidly make an accurate diagnosis. To do this, a pathologist must have all the correct tests available in order to precisely understand all of the diagnostic and prognostic characteristics of a patient's tumor. The Thermo Scientific comprehensive antibody panels include all major disease states, ensuring that the ideal test will always be available to diagnose your patient. Recognized to be some of the most advanced markers in the industry, the frequently referenced rabbit monoclonal antibodies are incorporated into these panels, providing superior sensitivity and specificity to that of other antibodies. Complete antibody panels organized by tumor origin ensure that clinical laboratories have the information required to deliver optimal patient care.



For a comprehensive list of antibodies organized by tumor origin visit our web site at [www.thermo.com/labvision](http://www.thermo.com/labvision).

Thermo Fisher Scientific is the one company that can provide everything you need and everything you will need for your anatomical pathology laboratory.

## Thermo Scientific Detection Systems

### UltraVision LP – Standardization with industry-leading technology.

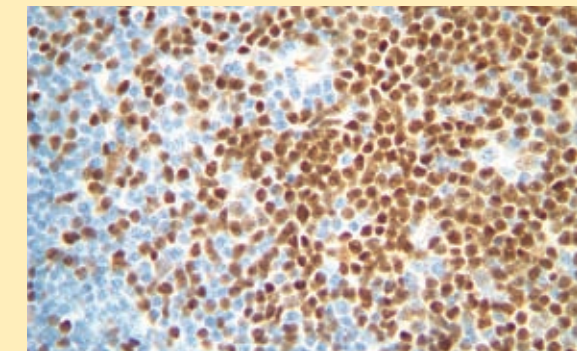
- Small molecule polymer and enhancer provide the cleanest, most robust staining of any system available.
- Dual link configuration ensures that a single detection system can be used for all your clinical protocols.
- InVitro Diagnostic (IVD) labeled.
- Best value available.

### Multivision – Accelerate diagnosis and easily differentiate cell types.

- Twice the patient data per slide.
- Cell types are easy to differentiate via highly contrasting red and blue chromogens.
- Utilizes rabbit monoclonal technology.
- Easy-to-use protocol can be incorporated into standard procedures.
- Decreases workload while maintaining revenue, as reimbursement is still for two tests.
- InVitro Diagnostic (IVD) labeled.

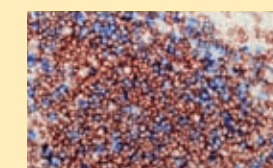


### ULTRAVISION LABELED POLYMER

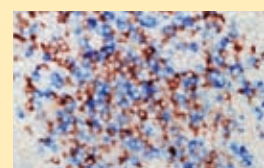


Cyclin D1 (RM-9104) on Mantle Cell Lymphoma

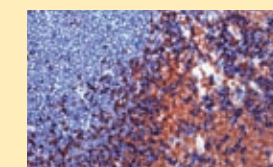
### MULTIVISION



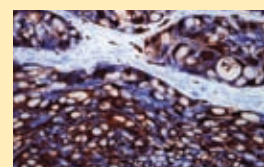
CD4 (Red) CD8 (Blue)  
MV-2001-R7



Kappa (Red) Lambda (Blue)  
MV-2003-R7



CD3 (Red) CD20 (Blue)  
MV-2002-R7



Vimentin (Blue) Melanoma  
(Red) MV-2004-R7



## Laboratory Information System (LIS) Integration

### Significant workflow improvements and error reduction.

Patient data integrity and error reduction are paramount to standardization for the clinical laboratory. Integration of laboratory equipment ensures that errors are kept to a minimum and that patient information follows each sample, from biopsy to diagnosis. Integration of the Thermo Scientific Autostainer and PTModule enable information to flow seamlessly from the LIS to the Autostainer system via direct communication. Bar coded slides and reagents allow little room for errors or inaccurate data. This process frees technologists from the time-consuming task of programming every test request into an instrument. With Thermo Scientific custom integration solutions, you can rest assured, knowing that your system provides the most extensive patient data protection possible.



## Instrumentation

### The Industry Standard in IHC Automation

With a proven record for consistency and dependability, and more than 5,000 units placed, the Thermo Scientific Autostainer platform is the most widely used IHC instrument in the world.

- Dual bar coding verifies that the correct test is performed on the patient while reducing errors.
- Completely open system allows you to control your own costs, and configure the instrument to meet your needs.
- Rapid turnaround time gets your patient diagnosed faster.
- Modular system allows up to four instruments and multiple PTModules to be linked to a single computer, requiring less space and centralizing data.
- Working directly with the manufacturer provides significant value.



### Thermo Scientific Autostainer 720

The Autostainer 720 handles up to 84 slides at once, making it the ideal solution for high throughput laboratories.



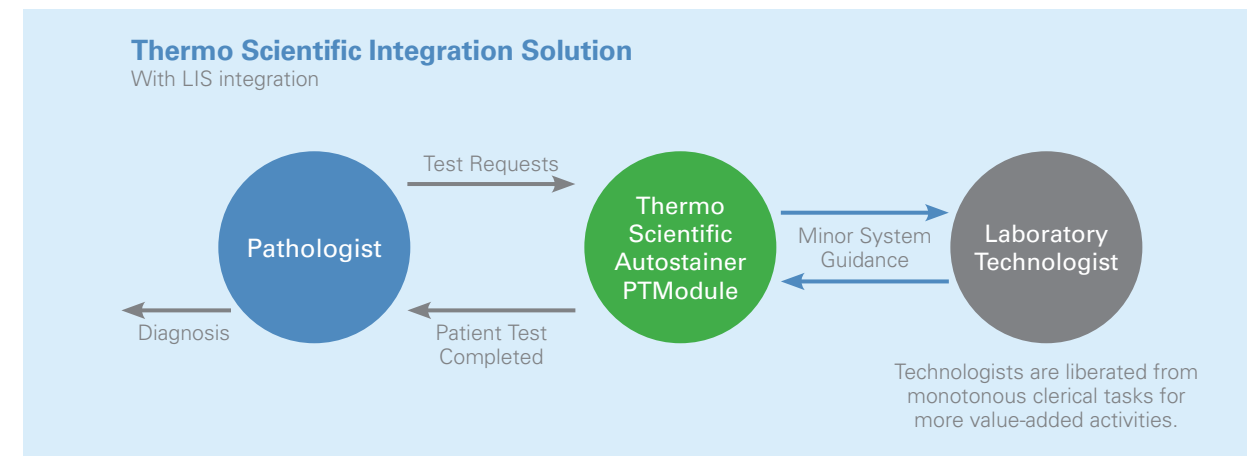
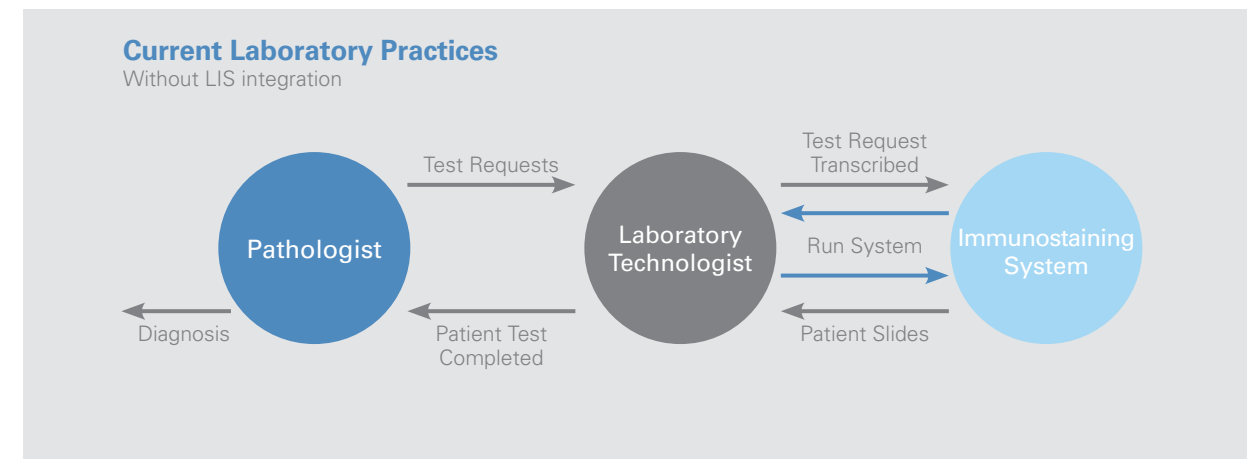
### Thermo Scientific Autostainer 360

The Autostainer 360 is the ideal solution for labs where speed and continuous workflow are key.



### Thermo Scientific PTModule

The PTModule is the benchmark of standardization in the antigen retrieval process; provides regulatory compliant reports.





## Optimized Anatomical Pathology

Do you want to increase your lab's capability for faster turnaround times, improve diagnostic results, and significantly reduce workload and errors? Utilizing the Thermo Scientific PathDesign® software we can show you how to optimize your lab in a 3D environment with the complete anatomical pathology solution.

## Optimized IHC



### ① Thermo Scientific Autostainer and PTModule

The STP420 and ClearVue perfectly complement the Autostainer and PTModule. Together they create a complete system that guarantees optimal results with same-day processing from biopsy to diagnosis.



### ② Thermo Scientific STP420 Tissue Processor

The STP420 with Fast Flex technology increases throughput and streamlines workflow by reducing processing times from 11–12 hours down to less than 4.5 hours.



### ③ Thermo Scientific ClearVue

The ClearVue glass coverslipper sees past workflow obstacles by optically analyzing each slide to ensure proper positioning and volume of mounting medium.