

# Are you missing ER positive patients?

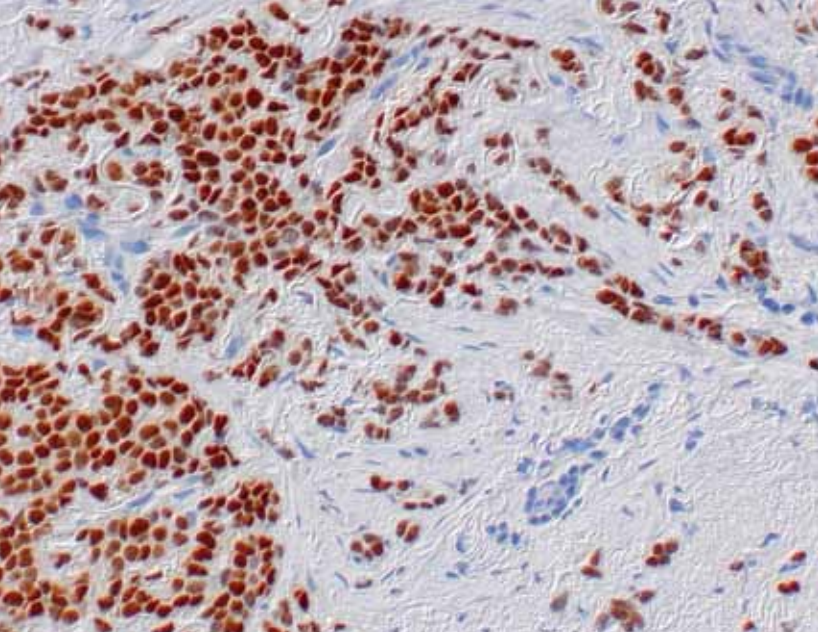
Are you currently using the Thermo Scientific Estrogen Receptor (ER) antibody clone SP1 in your laboratory? If not, you may be missing patients who should receive therapy.<sup>1,2</sup>

In studies, ER clone SP1 has identified up to 8% more patients who would benefit from endocrine therapy but were scored ER negative by other clones.<sup>1</sup> These patients are not receiving the treatment they need because of a potentially incorrect result from another clone.

**Please call (800) 828-1628 for a complementary evaluation package of the Estrogen Receptor (ER) antibody clone SP1.**

Estrogen Receptor (ER), clone SP1, RM-9101

**PROMO CODE LV10009**



Estrogen Receptor, clone SP1, RM-9101

For more information on Thermo Scientific Estrogen Receptor antibody testing with SP1, review the references listed below. Call (800) 828-1628 for ordering or to speak to your local representative.

Order Number	Format	Recommended Dilution	Tests
RM-9101-S	1.0ml concentrate	1:100	~500
RM-9101-S1	0.5ml concentrate	1:100	~250
RM-9101-S0	0.1ml concentrate	1:100	~50
RM-9101-R7	7ml Ready-To-Use	Prediluted	~35

**References:**

- 1) Cheang MC et al. Immunohistochemical detection using the new rabbit monoclonal antibody SP1 of estrogen receptor in breast cancer is superior to mouse monoclonal antibody 1D5 in predicting survival. *J Clin Oncol.* 2006 Dec 20;24(36):5626-8.
- 2) Gown AM. Current issues in ER and HER2 testing by IHC in breast cancer. *Modern Pathology* (2008) 21, S8–S15.
- 3) Hammond, MEH et al. American Society of Clinical Oncology/College of American Pathologists Guideline Recommendations for Immunohistochemical Testing of Estrogen and Progesterone Receptors in Breast Cancer. *Arch Pathol Lab Med.* 2010;134:907–922