

Cyclin D1 (EPR2241IHC)

Rabbit Monoclonal Antibody

Cat. #RM-2113-S0, or -S (0.1ml, or 1.0ml Supernatant)

Cat. #RM-2113-R7 (7.0ml) (Ready-to-Use for Immunohistochemical Staining)

Cat. #RM-2113-RQ (12.0ml) (Ready-to-Use for Automated Immunohistochemical Staining)

Please note this data sheet has been changed effective December 14, 2011

Description: Cyclin D1 or PRAD-1 or bcl-1 is a key cell cycle regulator. It functions in association with cdk4 and/or cdk6 by phosphorylating the retinoblastoma protein that releases transcription factors to initiate DNA replication. It is a putative proto-oncogene overexpressed in a wide variety of human neoplasms. In lymphoid lesions, with the exception of few rare diseases, it is specific for mantle cell lymphoma (MCL).

Mol. Wt. Of Antigen: 36kDa

Epitope: not determined

Ig Isotype: Rabbit IgG

Species Reactivity: Human. Other species not tested.

Clone Designation: (EPR2241 IHC)

Immunogen: A synthetic peptide corresponding to residues near the C-terminus of human Cyclin D1

Applications and Suggested Dilutions:

- Immunohistology (Formalin/paraffin)

Use Ab 1:100 for 20 min at RT using UltraVision LP detection systems

Use Ab 1:200 for 20 min at RT using UltraVision Quanto detection systems

* (Staining of formalin-fixed tissues REQUIRES boiling tissue sections in 1mM EDTA, pH 8.0, heating to 98°C for 20 min using the Thermo Scientific PT Module)

The optimal dilution for a specific application should be determined by the investigator.

Positive Control: Mantle cell lymphoma

Cellular Localization: Nuclear

Supplied As: Tissue culture supernatant with 15mM sodium azide.

or
Prediluted antibody which is ready-to-use for immunohistochemical staining.

Storage and Stability: Store vial at 4°C. When stored at 2-8°C, this antibody is stable for 24 months.

References:

1. Cheuk W, et. al. Am J Surg Pathol. 2004 June; 28 (6) 801-7

Limitations and Warranty:

Our products are intended FOR RESEARCH USE ONLY and are not approved for clinical diagnosis, drug use or therapeutic procedures. No products are to be construed as a recommendation for use in violation of any patents. We make no representations, warranties or assurances as to the accuracy or completeness of information provided on our data sheets and website. Our warranty is limited to the actual price paid for the product. NeoMarkers is not liable for any property damage, personal injury, time or effort or economic loss caused by our products.

Material Safety Data:

This product is not licensed or approved for administration to humans or to animals other than the experimental animals. Standard Laboratory Practices should be followed when handling this material. The chemical, physical, and toxicological properties of this material have not been thoroughly investigated. Appropriate measures should be taken to avoid skin and eye contact, inhalation, and ingestion. The material contains 0.09% sodium azide as a preservative. Although the quantity of azide is very small, appropriate care should be taken when handling this material as indicated above. The National Institute of Occupational Safety and Health has issued a bulletin citing the potential explosion hazard due to the reaction of sodium azide with copper, lead, brass, or solder in the plumbing systems. Sodium azide forms hydrazoic acid in acidic conditions and should be discarded in a large volume of running water to avoid deposits forming in metal drainage pipes.



Cyclin D1 (EPR2241IHC)

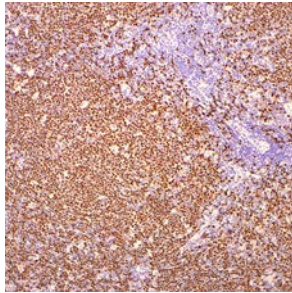
Rabbit Monoclonal Antibody

Cat. #RM-2113-S0, or -S (0.1ml, or 1.0ml Supernatant)

Cat. #RM-2113-R7 (7.0ml) (Ready-to-Use for Immunohistochemical Staining)

Cat. #RM-2113-RQ (12.0ml) (Ready-to-Use for Automated Immunohistochemical Staining)

Please note this data sheet has been changed effective December 14, 2011

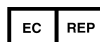


Formalin-fixed, paraffin-embedded human mantle cell lymphoma stained with rabbit monoclonal anti-Cyclin D1 antibody (Cat.#RM-2113-S) using peroxidase-conjugate and DAB. Note nuclear staining of tumor cells.

For Research Use Only



Lab Vision Corporation
46360 Fremont Blvd.
Fremont, CA 94538-6406, USA
US Toll Free: 1 (800) 522-7270
Phone: +1 (269) 544-5600
Fax: 1 (269) 372-2674
www.thermoscientific.com/labvision



Thermo Fisher Scientific
Anatomical Pathology
Tudor Road, Manor Park
Runcorn, Cheshire WA7 1TA, UK
Tel: +44 (0) 1928 534 050
Fax: +44 (0) 1928 534 049
sales.ap.uk@thermofisher.com