

COX-1

Rabbit Polyclonal Antibody

Cat. #RB-10687-P0, -P1, or -P (0.1ml, 0.5ml, or 1.0ml at 200µg/ml) (Affinity Purified Ab with BSA and Azide)

Cat. #RB-10687-R7 (7.0ml) (Ready-to-Use for Immunohistochemistry)

Please note this data sheet has been changed effective December 14, 2011

Description: Cyclooxygenases 1 and 2 (COX-1, COX-2) are enzymes involved in the conversion of arachidonate to prostaglandins. COX-1 and COX-2 are very similar in structure and function, though they vary in expression. COX-1 is normally expressed in most cell types, whereas COX-2 expression is at low levels unless induced by hormonal stimuli. In some breast cancer and bladder carcinoma studies, COX-1 was expressed in the stroma cells adjacent to the tumors but not in tumor cells.

Mol. Wt. Of Antigen: 72kDa

Epitope: C-terminal

Species Reactivity: Human. Others not tested.

Immunogen: Synthetic peptide corresponding to C-terminal of human COX-1.

Applications and Suggested Dilutions:

- Immunohistology (Formalin/paraffin)

(Ab at 1:25 for 30 min with LV's UltraVision Detection System)

* [Staining of formalin-fixed tissues requires boiling tissue sections in 10mM citrate buffer, pH 6.0 for 10-20 min followed by cooling at RT for 20 min.]

The optimal dilution for a specific application should be determined by the investigator.

Positive Control: Esophagus

Cellular Localization: Cytoplasmic

Supplied As:

Antibody fraction purified from rabbit anti-serum. Prepared in 10mM PBS, pH7.6, with 0.2% BSA and 15mM sodium azide.

or

Prediluted antibody which is ready-to-use for staining of formalin-fixed, paraffin-embedded tissues.

Storage and Stability:

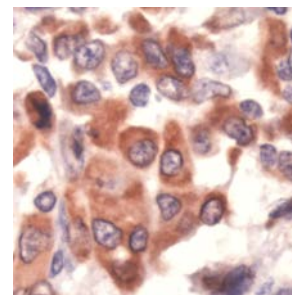
Store vial at 4°C. When stored at 2-8°C, this antibody is stable for 24 months.

Limitations and Warranty:

Our products are intended FOR RESEARCH USE ONLY and are not approved for clinical diagnosis, drug use or therapeutic procedures. No products are to be construed as a recommendation for use in violation of any patents. We make no representations, warranties or assurances as to the accuracy or completeness of information provided on our data sheets and website. Our warranty is limited to the actual price paid for the product. Lab Vision is not liable for any property damage, personal injury, time or effort or economic loss caused by our products.

Material Safety Data:

This product is not licensed or approved for administration to humans or to animals other than the experimental animals. Standard Laboratory Practices should be followed when handling this material. The chemical, physical, and toxicological properties of this material have not been thoroughly investigated. Appropriate measures should be taken to avoid skin and eye contact, inhalation, and ingestion. The material contains 0.09% sodium azide as a preservative. Although the quantity of azide is very small, appropriate care should be taken when handling this material as indicated above. The National Institute of Occupational Safety and Health has issued a bulletin citing the potential explosion hazard due to the reaction of sodium azide with copper, lead, brass, or solder in the plumbing systems. Sodium azide forms hydrazoic acid in acidic conditions and should be discarded in a large volume of running water to avoid deposits forming in metal drainage pipes.



FFPE human esophagus stained with anti-Cox-1 (cat.# RB-10687-P) using peroxidase conjugate and AEC chromogen. Note Cytoplasmic staining.

For Research Use Only

