

c-erbB2 / HER-2 / neu (clone SPM495)

Mouse Monoclonal Antibody

Cat. #MS-10463-P0, -P1, or -P (0.1ml, 0.5ml, or 1.0ml at 200µg/ml) (Purified Ab with BSA and Azide)

Cat. #MS-10463-R7 (7.0ml) (Ready-to-Use for Immunohistochemical Staining)

Cat. #MS-10463-PCS (5 Slides) (Positive Control for Histology)

Please note this data sheet has been changed effective Mar 25, 2009

Description: c-erbB-2 is a receptor tyrosine kinase of the c-erbB family. It is structurally closely related to the epidermal growth factor receptor. c-erbB-2 oncoprotein is detectable in a proportion of breast and other adenocarcinomas, as well as transitional cell carcinomas. In the case of breast cancer, expression determined by immunohistochemistry has been shown to be associated with poor prognosis.

Mol. Wt. Of Antigen: 185kDa

Epitope: C-terminial

Ig Isotype: IgG₁/κ

Species Reactivity: Human, Mouse and Rat. Others not tested.

Immunogen: Synthetic peptide corresponding to C-terminus of human c-erbB2 protein

Clone Designation: SPM495

Applications and Suggested Dilutions:

- Immunohistology (Formalin/paraffin)

(Ab at 1:25 for 60 min with LV's UltraVision LP Systems)

* [Staining of formalin-fixed tissues requires boiling tissue sections in 10mM citrate buffer, pH 6.0 for 10-20 min followed by cooling at RT for 20 min.]

The optimal dilution for a specific application should be determined by the investigator.

Positive Control: Breast carcinoma

Cellular Localization: Cell membrane

Supplied As: 200µg/ml of antibody purified from mouse ascites through protein G. Prepared in 10mM PBS, pH 7.6, with 0.2% BSA and 15mM sodium azide.

or

Prediluted antibody which is ready-to-use for immunohistochemical staining.

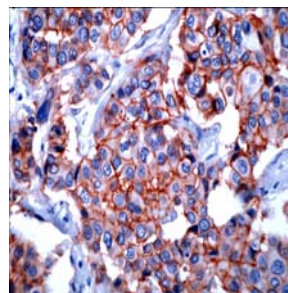
Storage and Stability: Store vial at 4°C. When stored at 2-8°C, this antibody is stable for 24 months.

Limitations and Warranty:

Our products are intended FOR RESEARCH USE ONLY and are not approved for clinical diagnosis, drug use or therapeutic procedures. No products are to be construed as a recommendation for use in violation of any patents. We make no representations, warranties or assurances as to the accuracy or completeness of information provided on our data sheets and website. Our warranty is limited to the actual price paid for the product. NeoMarkers is not liable for any property damage, personal injury, time or effort or economic loss caused by our products.

Material Safety Data:

This product is not licensed or approved for administration to humans or to animals other than the experimental animals. Standard Laboratory Practices should be followed when handling this material. The chemical, physical, and toxicological properties of this material have not been thoroughly investigated. Appropriate measures should be taken to avoid skin and eye contact, inhalation, and ingestion. The material contains 0.09% sodium azide as a preservative. Although the quantity of azide is very small, appropriate care should be taken when handling this material as indicated above. The National Institute of Occupational Safety and Health has issued a bulletin citing the potential explosion hazard due to the reaction of sodium azide with copper, lead, brass, or solder in the plumbing systems. Sodium azide forms hydrazoic acid in acidic conditions and should be discarded in a large volume of running water to avoid deposits forming in metal drainage pipes.



FFPE human breast carcinoma stained with anti-c-erbB2 (cat.# MS-10463-P) using peroxide conjugate and AEC chromogen. Note: Membrane staining.

For Research Use Only

